

Newsletter



St Martin's CE Primary School Issue 20: 8th March 2024

Class	Attendance %
	% Up on last week % Down on last week
Ash	98.1%
Beech	98.6%
Birch	92.7%
Chestnut	93.2%
Elm	95.8%
Holly	87.6%
Maple	98%
Oak	90.9%
Olive	83.7%
Palm	96.9%
Pine	89%
Rowan	98.1%
Sycamore	89.5%
Willow	89.8%

Good Samaritan Award



Good Samaritan Project

This week's winner of the Good Samaritan Awarded to Demi in Year 3 for always showing kindness and a willingness to help her friends.

Dear Parents and Carers,

What a wonderful World Book Day it has been today: so many wonderful costumes from the children and the staff—there are some pictures on the next page for you to look at.

Thank you to so many people who came for the Mother's Day breakfast over the last two days and a big thank you goes to the PTA for organising. The pre-loved book fair and uniform sale was a success—we will update you with how much was raised when we have the final figures.

Next Thursday is Parent's Evening between 15:30 & 19:00—if you have not made an appointment with your child's teacher please see them next week.

We say goodbye to Mrs. Latif today, as she starts a new adventure with a new baby. Thank you for all your hard work and dedication.

If you have any safeguarding concerns please ask to speak to one of the following adults: Miss Hodis (EYFS & Year 1 Lead), Miss Attwood (Assistant Head, Year 2 and 3 Lead), Miss Mohammadi (Year 4,5 and 6 Lead), Mrs Coates (Headteacher), Mr Rowden (Deputy Headteacher) or Miss Higgins (Assistant Head / SENDCo).

Our school values:

During the week all the staff will be looking out for exceptional examples of when children are showing these values and they may be awarded a certificate in Friday's assembly.

What value did you show this week to your friends? Which value do you think you will be able to show next week?



Click on the link for the latest updates at St. Martin's Church

<http://www.stmartinwestdrayton.org.uk>

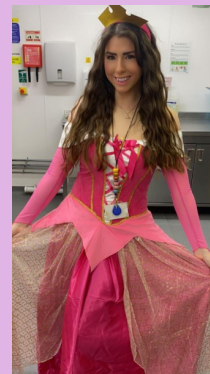
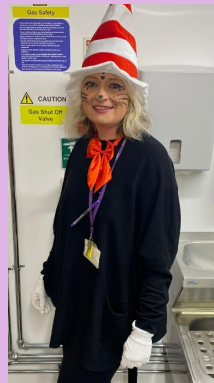
To enable spiritual growth and show the love of God to everyone.

Mothers day breakfast

It was wonderful to see so many of you attending this special annual breakfast event. We hope all mothers/carers have a fantastic Mothers day on Sunday.

Book Week.

The whole school really got into the spirit of book week with wonderful costumes on show. Below are a few picture of members of staff.



Trips—year 1 & 2

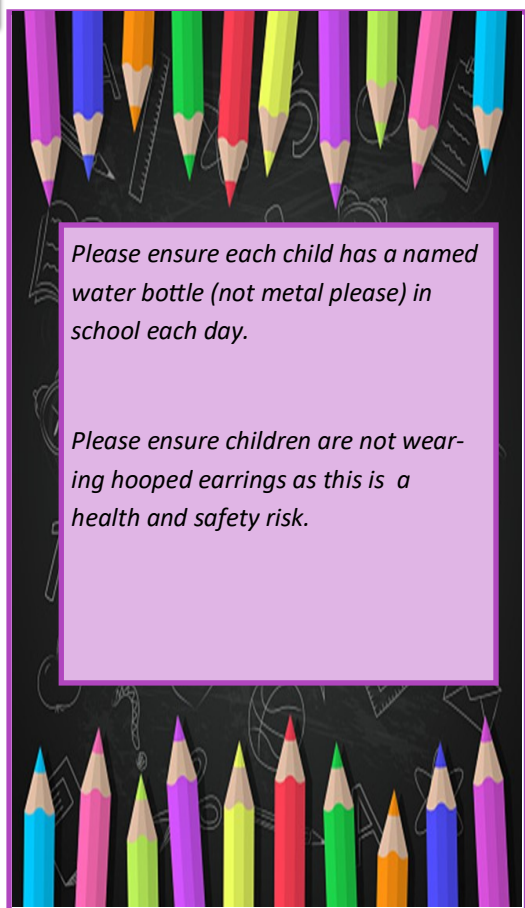
Letters have been sent home with the children today regarding exciting upcoming trips to Hounslow Urban Farm and Odds farm. The payment instalments are visible on ParentPay.

Science Week

On Friday 15th March the children can dress up as what they want to be when they are older. The children should consider what scientific things they would need to know to be able to do that chosen job. For example a Chef would need to know about healthy eating, what foods are good for the body, boiling points of liquids, changing state from a solid to a liquid e.g melting chocolate etc. They should come to school ready to talk about this in class with their peers.



Other news



Stand Out Learners & Value Award

Class	'Stand Out Learner'	Value Award
Ash	Belle	Elijah
Beech	Finley	Ola
Birch	Freddie	Harvey
Chestnut	Summer	Tommy
Elm	Freddy	Kyla
Holly		
Maple		
Oak	Rosie	Bart
Olive		
Palm		
Pine	Jade	Favour
Rowan		
Sycamore	Xander	Mohammed
Willow		

Dates for the Diary:

Whole School Events

Friday 15th March	Dress up—what do you want to be when you grow up. See above for details
Friday 15th March	Tuck shop after school
TBC	Easter games afternoon 3pm—4.30pm
Friday 26th April	Doughnut day—for sale after school
TBC	Quiz night
W/C 13th May	Year 6 SATS Breakfast
Friday 24th May	Fizzy Friday—for sale after school
Thursday 13th & Friday 14th June	Fathers day breakfast
Friday 28th June	Ice pop—for sale after school
Saturday 13th July	Summer fair 12pm—4pm
Friday 19th July	Year 6 leavers party

The Senior Leadership Team is made up of: Mrs Coates, Headteacher ; Mr Rowden, Deputy Headteacher; Miss Higgins, Assistant Head & SENDCo; Miss Attwood, Assistant Head, Year 2 and 3 Leader; Miss Mohammadi, Year 4, 5 and 6 Leader & Miss Hodis, Early Years and Year 1 Leader. If you need to raise a concern, please speak to your child's class teacher in the first instance. If you feel that you need to escalate to the next level, then please see your child's Key Phase Leader.





Congratulation's to Beech class who have won the
attendance award with 98.6% Well Done!

Who will be next???

NEW



AFTER SCHOOL CLUB

-  **MONDAY - FRIDAY (TERM TIME)**
-  **3.20PM - 6PM**
-  **ST MARTINS CE PRIMARY SCHOOL**
-  **FULL SESSION £15 (3.20 - 6PM)**
-  **PART SESSION £10 (3.20 - 4.30PM OR 4.20 - 6PM)**

Our after-school clubs provide a variety of enriching activities as well as a healthy snack.

*Children attending extra-curricular clubs will be accompanied to wraparound care when the club finishes at 4.20pm.

SCAN TO BOOK



BOOK ONLINE AT:

<https://thepsdgroup.magicbooking.co.uk>

Contact us for more information:

0203 397 7409

info@thepsdgroup.org.uk

  @thepsdgroupuk



ST MARTIN'S
CE Primary School



NEED TIME TO RELAX AND UNWIND?

CONTACT EALING'S "DEEP REST" PARENT CARER SUPPORT GROUP

Reduce stress | Feel better | Pamper yourself!

Take some time for yourself and practice "Deep Rest" – techniques that allow you to slow down your mind, regenerate, reduce stress and benefit your immune system. Sessions are led by Leah Barnett

<https://www.unwindwithleah.com/>.

"9PM ON WEDNESDAY IS RAPIDLY BECOMING A HIGHLIGHT OF MY WEEK"

"I LOVE THESE SESSIONS SO, SO MUCH!"

Join us and learn this relaxation practice, no equipment or fitness level required!

Every Wednesday evening, starting on Wednesday 10th January 2024 at 9pm

Where: online via Zoom

Need time to relax and unwind? Join Contact's "Deep Rest" parent carer support group, Reduce stress | Feel better | Pamper yourself! Take some time for yourself and practice "Deep Rest" – techniques that allow you to slow down your mind, regenerate, reduce stress and benefit your immune system. Join us and learn this relaxation practice, no equipment or fitness level required!

Dates - Starting Wednesday 10th January 2024 and every subsequent Wednesday evening at the same time during term time. **FREE for parents and carers of children with ASD or ADHD in NW London.**

To book please book via this link below to receive the Zoom meeting link:

<https://forms.office.com/e/irfFUZXQJe>

At Contact we are committed to protecting your privacy. Whenever you share personal data with us we aim to be clear with you, and not to do anything with your data that you wouldn't reasonably expect us to do. We will never sell your personal data to other organisations and will only ever share it in appropriate, legal or exceptional circumstances. Data may be selected for a random audit by the Advice Quality Standard Assessors. We will only send e-newsletter and marketing communications to those that have explicitly stated that they are happy for us to do so via their preferred channel(s) (e.g. email, SMS, phone) or where we have a legitimate interest reason for doing so. These communications include information about Contact's services supporting families with disabled children, and offers and information about how you can become involved, including fundraising, campaigning and volunteering. For further information on how your information is used and your rights with regards to your information, please see <https://contact.org.uk/privacy>



Daniella Logun Foundation

Tea, Coffee & Cake Afternoon!

FREE for the families, friends & carers of children with brain tumours and other cancers.

Time: 1:30pm to 2:30pm



07760 411 888



Childhood Cancers Brain Tumours Bereaved Families

St Matthew's Church Hall
High Street Yiewsley.

Every last Saturday of the month.

UB7 7QH

Drop-In Support

For residents of North-West London

Online Parents Drop-In

Meet new people & learn about support & services available to you



For parents and carers of ADHD/autistic children and young people

Our online drop-in support groups are a wonderful opportunity to talk to our family support team, who are here to offer guidance and support. Connect with other parents to share stories, offer advice, and build a supportive community. You are welcome whether your child is formally diagnosed, on the pathway, or if you suspect your child might need an assessment and want to know the next steps.

Mondays, 10.30 am – 12.00 pm

Wednesdays 7.00 pm – 8.30 pm



Contact enquiries@adhdandautism.org or scan the QR code to register

www.adhdandautism.org | Charity Registration No. 1193799



Every sunday 1pm til
3pm term time only

call Siobhan for more
info 07760442973

IVER
family
SEN

Swallow St, Iver SL0 0HS

club





What is DLD?

Developmental Language Disorder is a persistent language difficulty that can't be explained by another condition. It is lifelong and approximately two children in every classroom are impacted by it. It affects all languages, and is not caused by being speaking more than one language.

The Hillingdon Talks, Moves, Plays website has further information and training presentations on DLD for school staff and parents:



Skip
your ride,
take a
Stride

ST MARTIN'S PRIMARY SCHOOL WALK ZONE MAP

Let's make walking part
of your daily routine!

Key:

- 5 minute walking zone
- 10 minute walking zone
- Bus stop
- Zebra crossing
- Pedestrian crossing
- School entrance
- Library



A TRULY
COMMUNITY
PROJECT



**Can't walk
the whole way?**
Try to park in the
blue zone where
parking is
permitted and
walk the rest
of the trip.

**If you need to
drive - don't idle!**
It's a waste of
money and pollutes
the air that we
breathe!

Did you know?

Pollution levels are higher
inside the car than outside.



Attendance Matters

0 DAYS OFF 190 DAYS ATTENDED	100%	★ PERFECTION ★ "EXCELLENT ACHIEVEMENT"
4 SCHOOL DAYS OFF EACH YEAR	98%	IMPRESSIVE
7 SCHOOL DAYS OFF EACH YEAR	96%	NEARLY THERE
9 SCHOOL DAYS OFF EACH YEAR	95%	CAN BE IMPROVED "INCREASE YOUR CHANCES OF BETTER GRADES"
11 SCHOOL DAYS OFF EACH YEAR	94%	NEEDS TO IMPROVE
20 SCHOOL DAYS OFF EACH YEAR	90%	SERIOUS CONCERNS "CLASSSED AS A PERSISTENT ABSENTEE" referred to Education Welfare Service
30 SCHOOL DAYS OFF EACH YEAR	85%	RISK OF PROSECUTION <i>"can be damaging to a student's social, emotional and mental wellbeing"</i>
38 SCHOOL DAYS OFF EACH YEAR	80%	

Every Day Counts

Childhood Asthma


FREE Online Workshops

SCAN ME



CONTACT THE TEAM FOR MORE
INFORMATION

 01895 543 437

 nhsnwl.myhealth@nhs.net



What's Included In The Workshop ?

What to do if your
child is having an
Asthma attack

Inhaler
Techniques

Myth
Busting

Common
Triggers

Asthma
Plans

Q&A

SESSION PRESENTED BY A HILLINGDON ASTHMA NURSE